





RINAZ[®]
FASHION



WASHING INSTRUCTIONS

DO NOT USE ANY TYPE OF BLEACH OR STAIN REMOVING CHEMICALS
BEFORE CUTTING / STITCHING. FABRIC SHOULD BE SOAKED IN WATER
(ALL COMPONENTS SEPARATELY) FOR 15 MINUTES
DO NOT KEEP WET FABRIC IN TWISTED FORM IN ORDER TO AVOID COPY MARKS!
WASH COLOURED AND WHITE FABRICS SEPARATELY
IRON CLOTHES AT MODERATE TEMPERATURE! DO NOT DRY FABRIC IN DIRECT SUNLIGHT
(EXTRA LACES, HANGING AND ACCESSORIES ARE NOT INCLUDED)

TOP - FOX GEORGETTE WITH
HEAVY EMBROIDERY
BOTTOM INNER - HEAVY SHANTUN
DUPATTA - NAZNIN WITH
HEAVY EMBROIDERY

Ramsha

VOL-16

D.No.30003



RINAZ[®]
FASHION



30001

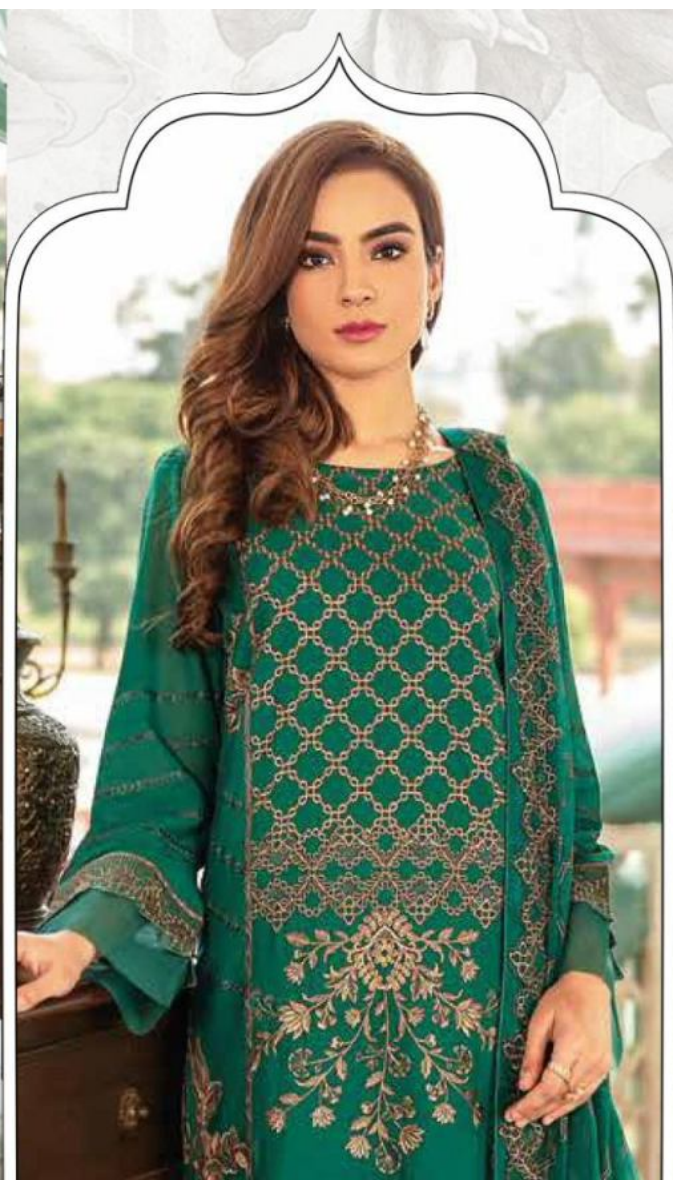


30002



30003

Ramsha
VOL-16



RINAZ[®]
FASHION

WASHING INSTRUCTIONS

DO NOT USE ANY TYPE OF BLEACH OR STAIN REMOVING CHEMICALS
BEFORE CUTTING / STITCHING. FABRIC SHOULD BE SOAKED IN WATER
(ALL COMPONENTS SEPARATELY) FOR 15 MINUTES
DO NOT KEEP WET FABRIC IN TWISTED FORM IN ORDER TO AVOID COPY MARKS!
WASH COLOURED AND WHITE FABRICS SEPARATELY
IRON CLOTHES AT MODERATE TEMPERATURE! DO NOT DRY FABRIC IN DIRECT SUNLIGHT
(EXTRA LACES, HANGING AND ACCESSORIES ARE NOT INCLUDED)

TOP - FOX GEORGETTE WITH
HEAVY EMBROIDERY
BOTTOM INNER - HEAVY SHANTUN
DUPATTA - NAZNIN WITH
HEAVY EMBROIDERY

Ramsha
VOL-16
D.No.30001



RINAZ[®]
FASHION

WASHING INSTRUCTIONS

DO NOT USE ANY TYPE OF BLEACH OR STAIN REMOVING CHEMICALS
BEFORE CUTTING / STITCHING. FABRIC SHOULD BE SOAKED IN WATER
(ALL COMPONENTS SEPARATELY) FOR 15 MINUTES
DO NOT KEEP WET FABRIC IN TWISTED FORM IN ORDER TO AVOID COPY MARKS!
WASH COLOURED AND WHITE FABRICS SEPARATELY
IRON CLOTHES AT MODERATE TEMPERATURE! DO NOT DRY FABRIC IN DIRECT SUNLIGHT
(EXTRA LACES, HANGING AND ACCESSORIES ARE NOT INCLUDED)

TOP - FOX GEORGETTE WITH
HEAVY EMBROIDERY
BOTTOM INNER - HEAVY SHANTUN
DUPATTA - NAZNIN WITH
HEAVY EMBROIDERY

Ramsha
VOL-16
D.No.30002

