





A woman with dark, wavy hair and large, ornate gold earrings is shown from the chest up. She is wearing a bright turquoise sari with a bold geometric pattern in orange and dark blue. The sari has a wide border featuring a floral and vine motif in orange, black, and blue. She is looking slightly to the side with a soft expression.

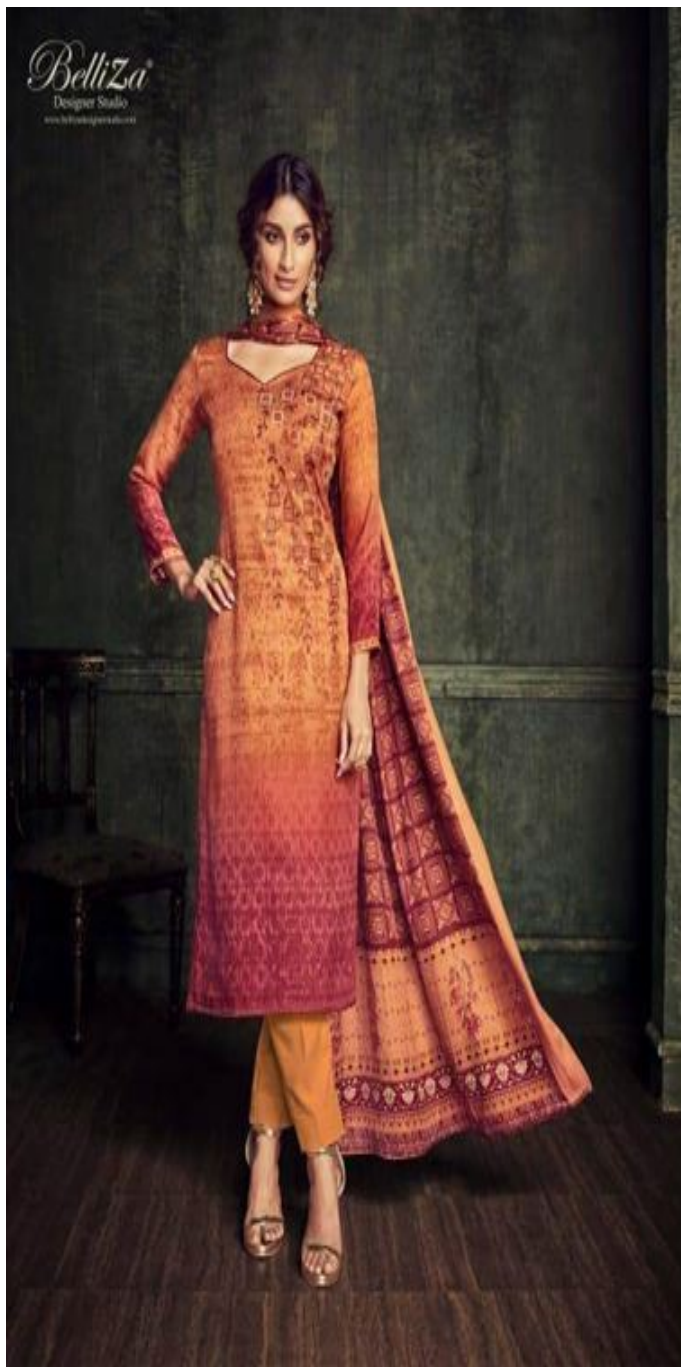
© 2000 Blackwell Science Ltd, *Journal of Internal Medicine* 247: 399–405

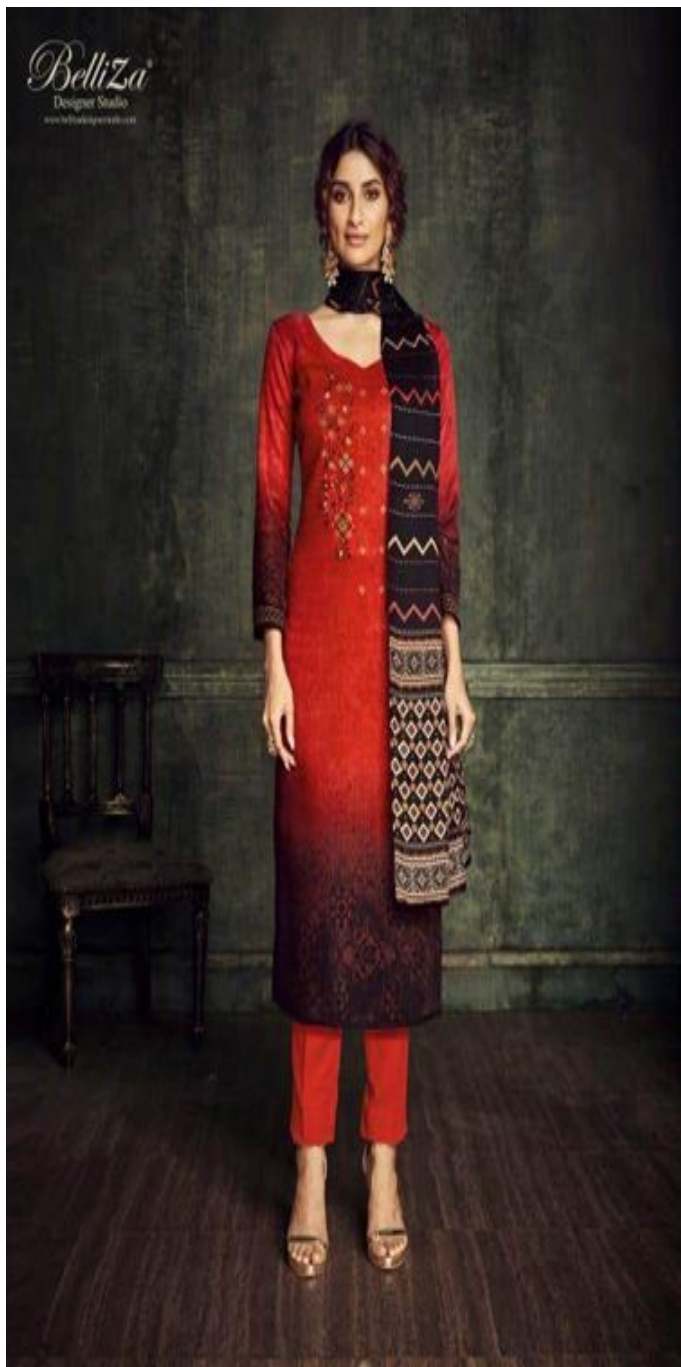


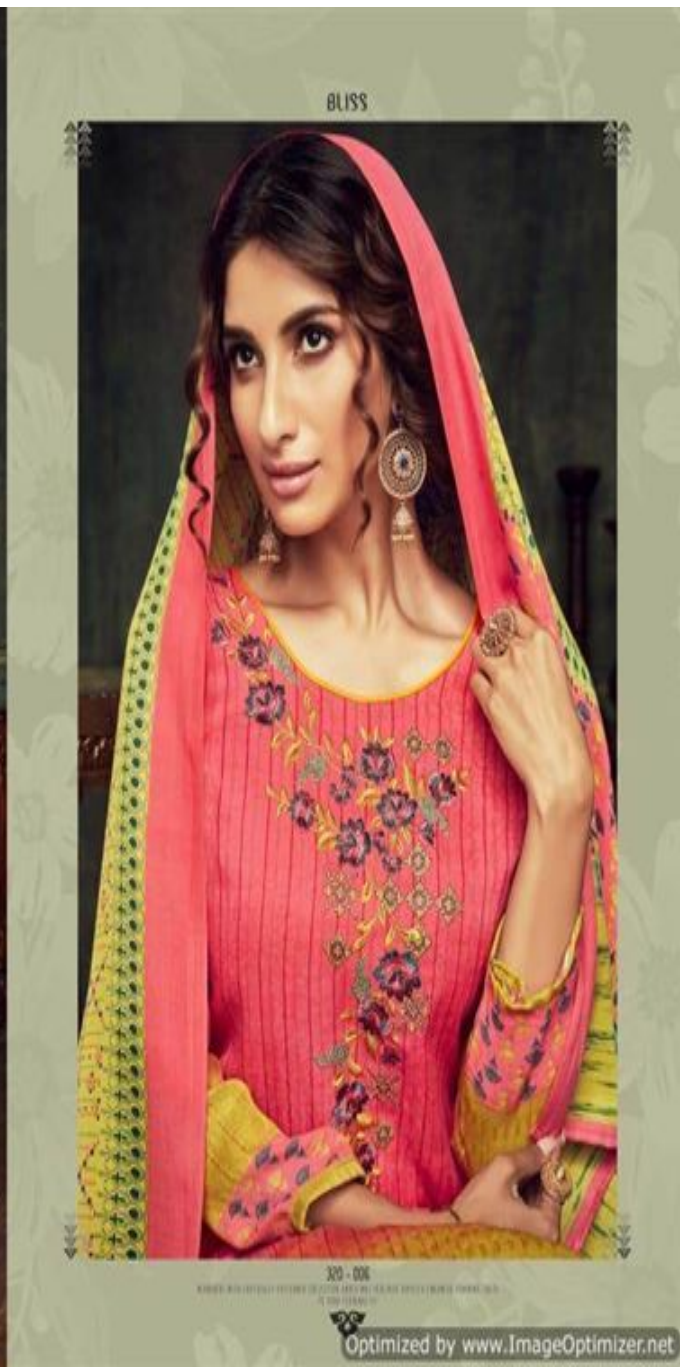
A woman is standing in a room, wearing a vibrant green and orange patterned shawl over a matching green and orange dress. The shawl features a bold geometric pattern in orange, red, and black on a green background. The dress is a solid green top with a matching green skirt. She is also wearing green leggings and gold high-heeled sandals. The background is a dark green wall with a wooden chair visible on the left.

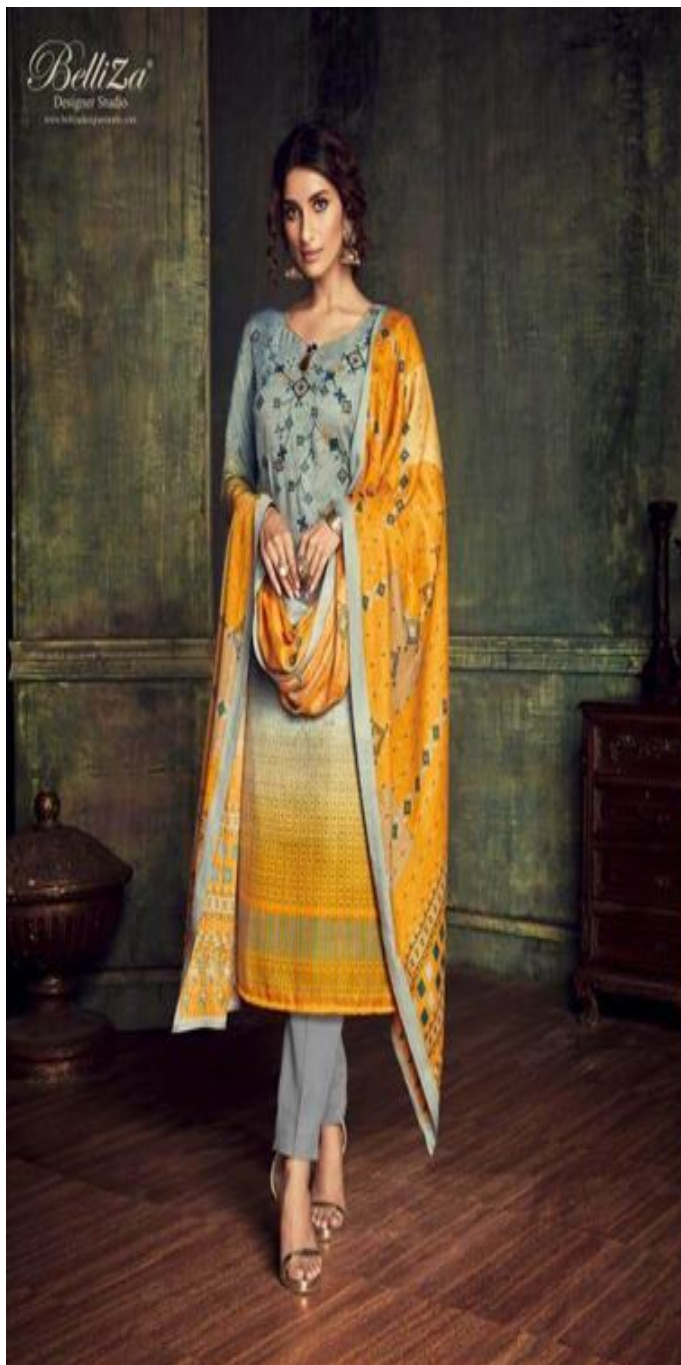
Optimized by www.ImageOptimizer.net











BelliZa
Designer Studio
www.bellizadesignerstudio.com



BLISS

320 - 009

SHAWER WITH CLOTHES TO WASH SELECTED WHITE AND COLORED CLOTHES TO WASH IN HAND

10. 100% COTTON

10. 100% COTTON

Optimized by www.ImageOptimizer.net





320 - 001



320 - 002



320 - 003



320 - 004



320 - 005



320 - 006



320 - 007



320 - 008



320 - 009



320 - 010

Belliza
Designer Studio
www.bellizadesignerstudio.com
BLISS

